

# LED WALL SCONCE



- \* Housing: Die-formed cold-rolled steel
- \* Shade: High transmission acrylic or glass creates excellent light distribution and uniformity
- \* LED: High efficiency, high CRI, binned and mixed to reach uniform light
- \* High power factor, low THD
- \* LED CRI: > 80
- \* 5 years warranty on driver and LED module
- \* Certification: ETL / cETL, Energy Star
- \* Finish Option: -62 Satin Nickel, -30 Oil Rubbed Bronze



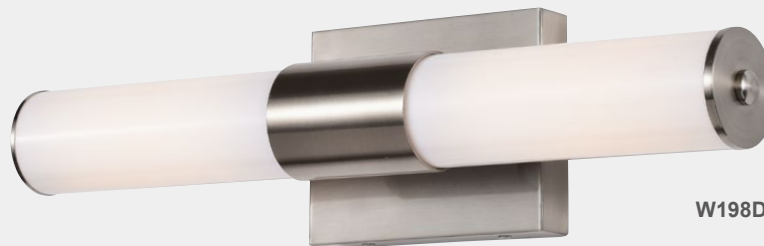
W189D



W188D



W193D



W198D

Model	Input Voltage	Input Wattage	LED CT	Lumen (typ)	Shade	Dimension (H x W x E)	Energy Star
W189D-xxxxK	120V ~ 277V	15W	3000K	1300	Acrylic	16.0" x 5.0" x 3.8"	YES
W188D-xxxxK	120V ~ 277V	9W	3000K	700	Acrylic	12.8" x 4.3" x 3.5"	YES
W193D-xxxxK	120V ~ 277V	15W	3000K	1180	Opal Glass	15.5" x 5.0" x 5.8"	--
W198D-xxxxK	120V ~ 277V	15W	3000K	1100	Acrylic	18.7" x 4.8" x 3.7"	YES

\* Lumen (typ): Tested with 3000K CT

\* More Color Temperature Option: 3500K, 4000K, 5000K