

Project Name	
Project #	
Model #	
Type	

## FRD-U033-CTW SERIES

### FEATURES & SPECIFICATIONS

**Intended Use:** The FRD-S6B/S8B series is an excellent choice for sleek modern new construction applications in which both style and energy efficiency are required. They are an excellent choice for offices, hospitals, classrooms, shopping centers, and other commercial applications requiring low-lighting power density. These LED lights are a superior replacement to typical fluorescent lighting products because of their increased efficiency, longer life, and offer an elegance unmatched by any fluorescent products. These Downlight come with D/C dimming option. These lights use SMD-3030 Chips to ensure optimal steady color and light output throughout the lifetime of the fixture.

**Installation:** These luminaries are ideal for new construction recessed lighting or retrofit projects (no housing).

**Rating: Damp Location**

**Warranty: 5 years**

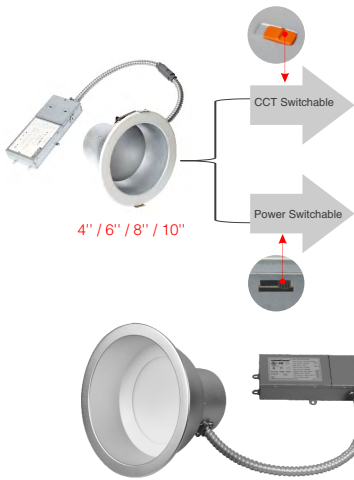
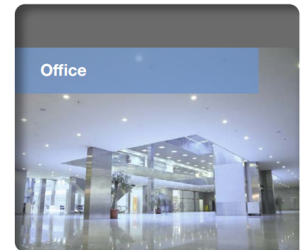
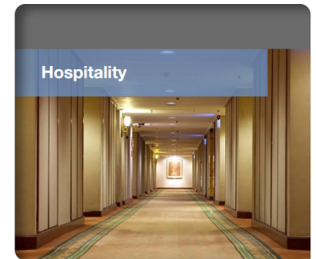
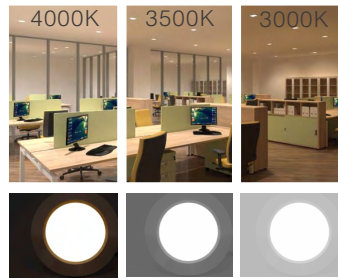
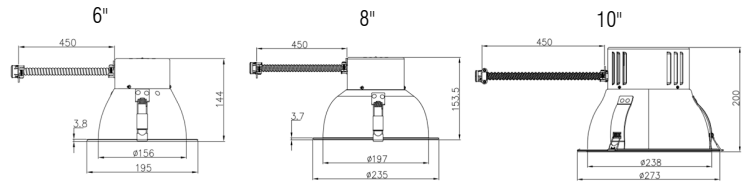
**Listings: UL**

**CRI: >80**

**Lifetime: 50,000 hours minimum**

**Fixture Body:** White powder coated trim with a silver reflector, aluminum body, and a frosted acrylic lens.

**Dimensions:**



Lumen Package

SIZE	Power	Lumen Output @ CR180
S	12W/8W/6W	1020lm/680lm/510lm
M	30W/24W/17W	2550lm/2040lm/1445lm
L	50W/43W/37W	4000lm/3440lm/2960lm

## ORDERING INFORMATION

**EX: FRD-U033-CTW6-M-UNV-CT-NCH**

Series	Wattage (Lumens)	Input Voltage	Temperature	Dimming	Mounting	Emergency
1a. FRD-U033-CTW04	2a. <b>S</b> (small): 12W 1,020lm / 8W 680lm / 6W 510lm	3a. 27V	4a. CT	5a. DCD	6a. RTF	7a. (Blank)
1b. FRD-U033-CTW06	2b. <b>M</b> (medium): 30W 2,550lm / 24W 2,040lm / 17W 1,445lm				6b. NCH	7b. EM
1c. FRD-U033-CTW08	2c. <b>L</b> (large): 50W 4,000lm / 43W 3,440lm / 37W 2,960lm					
1c. FRD-U033-CTW10						

Notes:

\*If you do not see an option you would like please inquire directly and we will work to accommodate your needs.\*

- |  |  |                              |                                       |
|--|--|------------------------------|---------------------------------------|
| 1a. 4" Available in <b>S</b> Power Package Only        | 3a. 120-277V Input Voltage             | 5a. 0-10V DC Dimming         | 7a. Leave Blank if not required       |
| 1b. 6" Available in <b>S, M &amp; L</b> Power Packages | 4a. CCT Switchable 3000K, 3500K, 4000K | 6a. Retrofit (No Housing)    | 7b. 90 Minute EM Pack (Field Install) |
| 1c. 8" Available in <b>S, M &amp; L</b> Power Packages |  | 6b. New Construction Housing |                                       |
| 1d. 10" Available in <b>M &amp; L</b> Power Packages   |  |                              |                                       |

\*All of the products and specifications can change without prior notice\*

\*Please note this specification sheet is considered to be business promotional material and not used for product listing identification purposes\*