

Project Name	
Project #	
Model #	
Type	

FBA-U097-LPC/LUPC LED Series

FEATURES & SPECIFICATIONS

Intended Use: The LPC series is an excellent choice for powerful and energy efficient lighting. These fixtures are made with aluminum housing. These luminaries offer great color uniformity and a prismatic polycarbonate diffuser for excellent lighting. The finish product has a refined and modern look with efficient LED technology to keep energy costs down while still providing excellent and long lasting lighting.

Installation: These luminaries are ideal for hallways, conference rooms, offices, and other locations that require modern efficient light fixtures. These luminaries are great for new construction and retrofit projects.

Rating: IP20

Warranty: 5 years

Listings: ETL, DLC

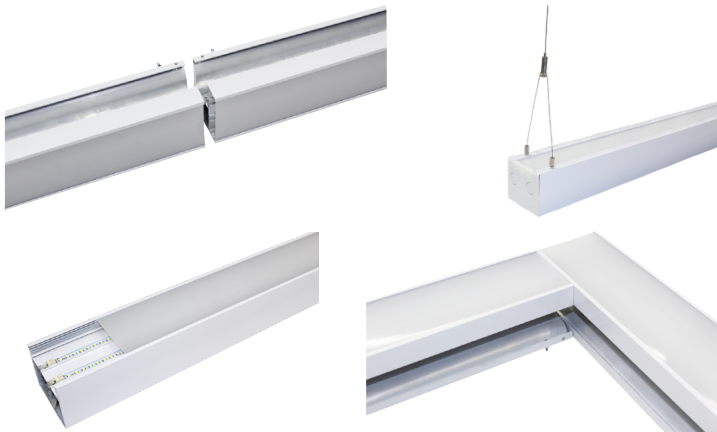
View Angle: 120°

Lifetime: 50,000 hours

Fixture Body: Aluminum /PC Diffuser Non-discoloring, 100% UV Stabilized Polycarbonate lens.

Dimension:

- L/UPC4: 46 31/32" L x 3 5/16" W x 2 29/32" H
- L/UPC8: 93 55/64" L x 3 5/16" W x 2 29/32" H



ORDERING INFORMATION

EX: FBA-LUPC8-4080-UNV-40K-LK-PC-WH-EM

Series	Watts / Lumens	Voltage	CCT	Diming	Link	Mounting	Finish	Battery
1a. FBA-U097-ULPC4	2a. 220 (40W; 4,200lm)	3a. 27V	4a. 30K (3000K)	5a.(Blank)	6a.(Blank)	7a. PC (Cable)	8a. WH	9a. (Blank)
1b. FBA-U097-LPC8	2b. 230 (60W; 6,300lm)		4b. 40K (4000K)	5b. DM	6b. LK (Link)	7b. SM (Surface)	8b. IA	9b. EM (Battery)
	2c. 240 (80W; 8,400lm)		4c. 50K (5000K)			7c. WM (Wall)	8c. BK	
1c. FBA-U097-LUPC4	2d. 1030 (40W, 4,200lm)		4d. 60K (6000K)					
1d. FBA-U097-LUPC8	2e. 2040 (60W, 6,300lm)							
	2f. 4080 (120W, 12,600lm)							

Notes:

1a. Down Available in 2a and 2b power options 3a. 100-277V input voltage 5b. 0-10V Dimming 5b. 0-10V Dimming 7a. Pendant Mount (Standard)
 1b. Down Available in 2c. power option only 5a. Leave blank if not required 6a. Leave blank if not required 6a. Leave blank if not required 7b. Surface Mount

1c. Up/Down 4ft Version Available in 2d.10W/30W & 2f. 20W/40W power options 7c. Wall Mount 9a. Leave blank if not required
 1b. Up/Down 8ft Version Available in 2f. 40W/80W power option only 8a. White 8b. Alum 8c Black 9b. 90 Minute EM Driver/Battery (Factory Install)

If you do not see an option you would like please inquire directly and we will work to accommodate your needs.

All of the products and specifications can change without prior notice

Please note this specification sheet is considered to be business promotional material and not used for product listing identification purposes